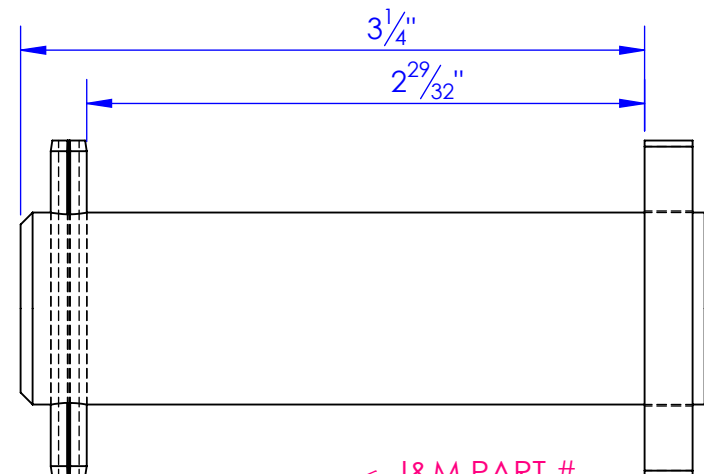
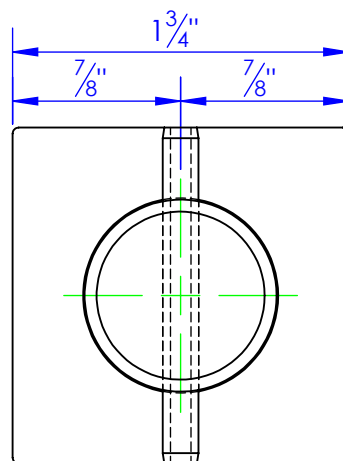
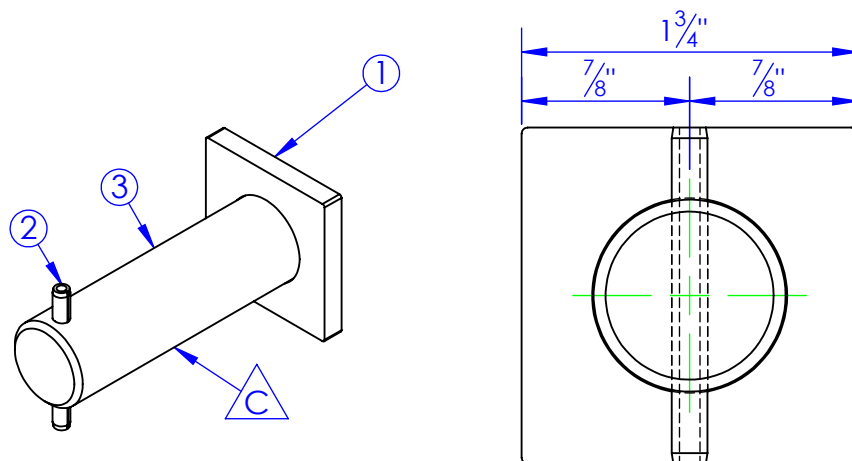


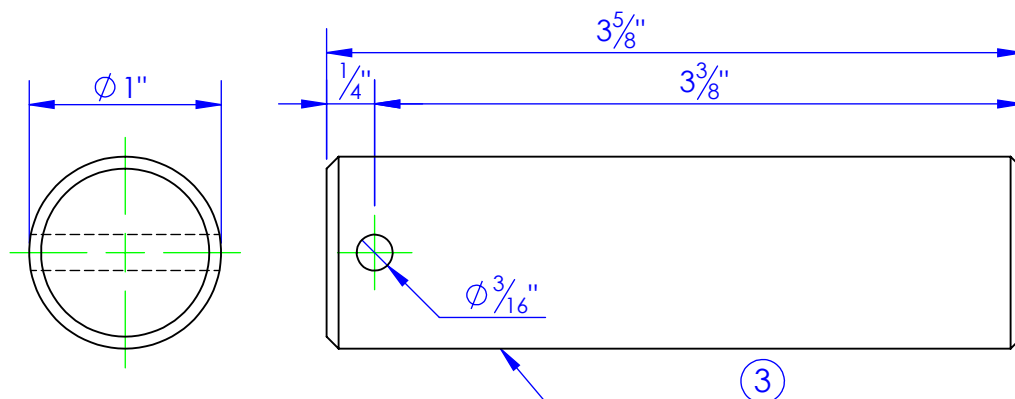
ITEM NO.	PART NUMBER	DESCRIPTION	MATERIAL	QTY.
1	FP-LINKAGE PIN TAB	LINKAGE PIN TAB	1/4" HRS	1
2	HD-PE-3/16x1-3/4	EXPANPIN 3/16x1-3/4	PE-3/16 x 1-3/4	1
3	STC-CR 1x4142 L 3.625	LENGTH: 3-5/8"	CF ANN 4142 1 RDx 12	1

REV.	REVISIONS DESCRIPTION	DATE	APPROVED
B	UPDATED TO MATCH 3D MODEL	1/9/2012	
C	MADED 1" PIN 3-5/8 FROM 3-3/8	12/10/2012	

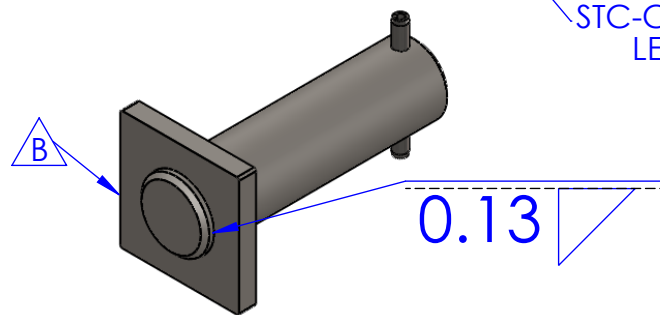
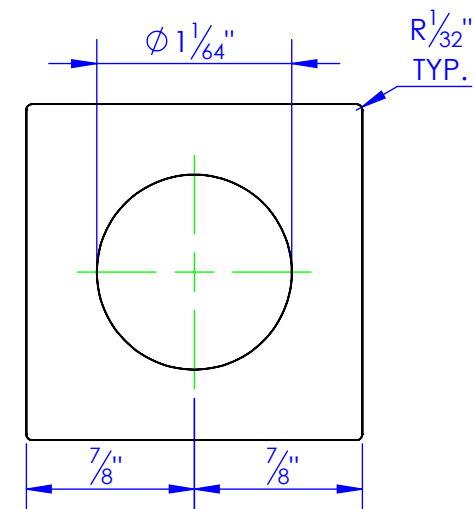
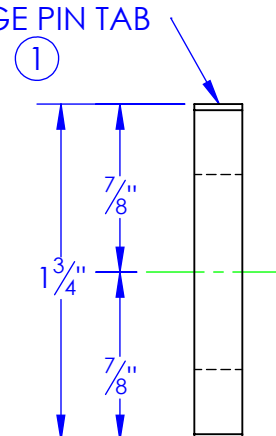


FP-LINKAGE PIN TAB  
LINKAGE PIN TAB

I&M PART #  
FP-LINKAGE PT



STC-CR 1x4142 L 3.625  
LENGTH: 3-5/8"



**PROPRIETARY AND CONFIDENTIAL**  
THE INFORMATION CONTAINED IN THIS  
DRAWING IS THE SOLE PROPERTY OF TRIPLE  
C INC. ANY REPRODUCTION IN PART OR  
AS A WHOLE WITHOUT THE WRITTEN  
PERMISSION OF TRIPLE C INC. IS PROHIBITED.

DIMENSIONS ARE IN INCHES TOLERANCES: FRACTIONAL $\pm 1/16$ ANGULAR: MACH $\pm 1$ BEND $\pm$ TWO PLACE DECIMAL $\pm 010$ THREE PLACE DECIMAL $\pm 005$	
MATERIAL	--
DO NOT SCALE DRAWING	

NAME	DATE
DRAWN HEATH	12/10/2012
PART #	
ASM #	RE-PN-1X300
COMMENTS:	
MAIN LINKAGE REAR PIN	

P.O. BOX 248,  
SABETHA, KS 66534

**TRIPLE C**  
INC.

SIZE A	DWG. NO. 10-1703 C	REV. C
SCALE: 1:1	WEIGHT: 0.96 LBS.	SHEET 1 OF 1